

LilyPond

The music typesetter

Changes

The LilyPond development team

This document lists changes and new features in LilyPond version 2.27.0 since 2.26.

For more information about how this manual fits with the other documentation, or to read this manual in other formats, see Section “Manuals” in *General Information*.

If you are missing any manuals, the complete documentation can be found at <https://lilypond.org/>.

This document has been placed in the public domain.

For LilyPond version 2.27.0

Note: LilyPond releases can contain syntax changes, which may require modifications in your existing files written for older versions so that they work in the new version. To upgrade files, it is **strongly recommended** to use the `convert-ly` tool distributed with LilyPond, which is described in Section “Updating files with `convert-ly`” in *Application Usage*. `convert-ly` can perform almost all syntax updates automatically. Frescobaldi users can run `convert-ly` directly from Frescobaldi using “Tools > Update with `convert-ly`...”. Other editing environments with LilyPond support may provide a way to run `convert-ly` graphically.

Table of Contents

Major changes in LilyPond	1
New for musical notation	2
Pitches improvements	2
Rhythm improvements	2
Expressive mark improvements	2
Repeat improvements	2
Editorial annotation improvements	2
Text and font improvements.....	2
New for specialist notation	3
Miscellaneous improvements	5

Major changes in LilyPond

None so far.

New for musical notation

Pitches improvements

None so far.

Rhythm improvements

- By default, strictly alternating meters consisting of 4/4 and 2/2 are printed in a historic style using multiple C or cut-C symbols.

```
{
  \time #'((2 . 2) (2 . 2))
  b'1 2 2
}
```



- The automatic beaming algorithm now can be told to interrupt an automatically created beam at some point using `\beamBreak`. Similarly, using `\noBeamBreak`, two adjoining notes can be forced to get beamed together:

```
\relative {
  c''8 c c c d d \beamBreak d d
  \time 2/4
  c8 8 8 8
  8 8 \noBeamBreak 8 8
  4. 8 \noBeamBreak
  8 4 8
}
```



Expressive mark improvements

None so far.

Repeat improvements

None so far.

Editorial annotation improvements

- The Scheme function `parenthesize-stencil` got an optional argument to lengthen the parentheses.
- The Scheme function `bracketify-stencil` got an optional argument to lengthen the brackets.

Text and font improvements

- An equal sign was added to the Emmentaler font.

New for specialist notation

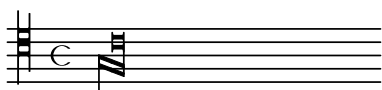
- The chord name input `x:1/x` gets now rendered as ‘N.C./x’.

```
\chords { d:1/d }
```

N.C./D

- White mensural ligatures now support final ascending longae facing backwards, obey tweaks in more cases, and handle errors more gracefully.

```
\score {
  \new PetrucciStaff {
    \clef "petrucci-c4"
    \[ g\breve f \tweak ligature-pes ##t c'\longa \]
  }
}
```



- Stanza numbers in lyrics are now created with a dedicated `\stanza ...` command. This replaces the former syntax `\set stanza =`

```
\relative {
  c'4 c g' g
  a a g2
}
\addlyrics {
  \stanza "1."
  Twin -- kle, twin -- kle, lit -- tle star
}
\addlyrics {
  \stanza "2."
  When the bla -- zing sun is gone
}
```



1. Twin-kle, twinkle, lit-tle star
2. When the bla-zing sun is gone

- Stanza numbers in lyrics can now be auto-repeated at the beginning of each line. To activate this feature, set the `stanzaReminders` property to `#t`:

```
\new Voice \relative {
  \key e \minor
  b'4 b a g
  fis2 e \break
  b'4 cis d b
  e2 dis \break
  e4 g fis fis
  e1
}
\addlyrics {
  \stanza "1."
}
```

```

\set stanzaReminders = ##t
Je -- su, mei -- ne Freu -- de,
mei -- nes Her -- zens Wei -- de,
\set stanzaReminderText = "(1st)"
Je -- su, mei -- ne Zier.
}
\addlyrics {
\stanza "2."
Un -- ter dei -- nem Schir -- men
bin ich vor den Stür -- men
\set stanzaReminders = ##t
\set stanzaReminderText = #make-tiny-markup
al -- ler Fein -- de frei.
}

```



1. Je-su, mei-ne Freu-de,
2. Unter deinem Schirmen



1. meines Herzens Wei-de,
- bin ich vor den Stürmen



- (1st) Je su, mei-ne Zier.
2. al-ler Feinde frei.

Miscellaneous improvements

- The new commands `\startGradualTempoChange` and `\stopGradualTempoChange` describe a temporary departure from the prevailing tempo. Currently, these affect only MIDI output.
- These functions, which have been deprecated since version 2.13.19, have been removed: `\deprecatedcresc`, `\deprecatedendcresc`, `\deprecateddim`, and `\deprecatedenddim`.